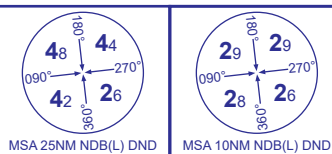


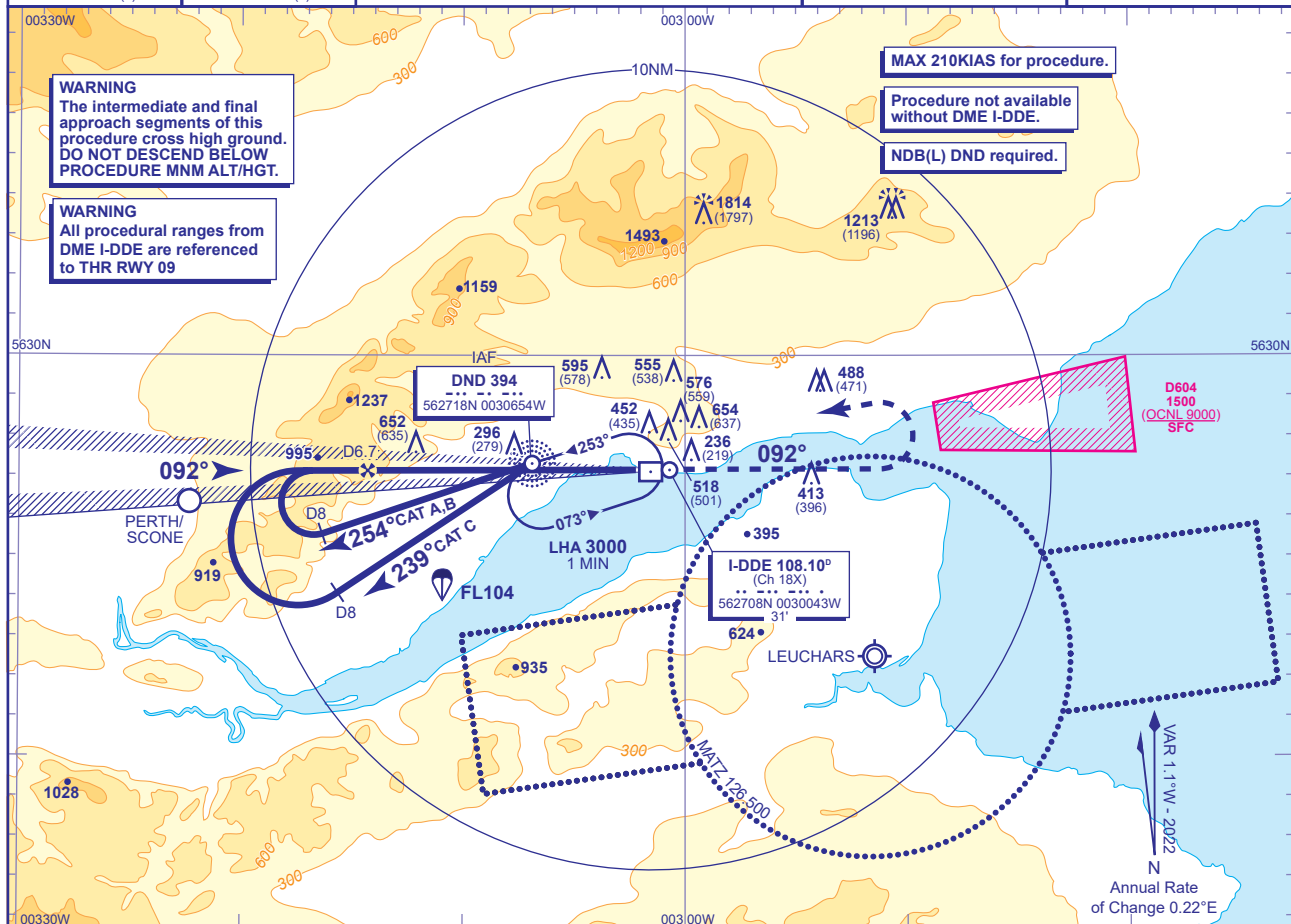
STANDARD INSTRUMENT APPROACH - ICAO

DUNDEE
ILS/DME
RWY 09
(ACFT CAT A,B,C)



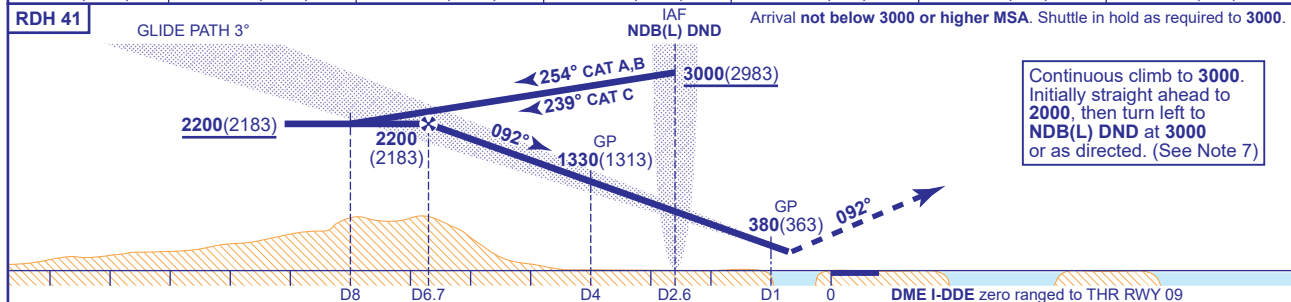
| | | | | |
|------|---------|--------------------|-----------------------|---------------------------------|
| APP | 122.905 | DUNDEE APPROACH | AD ELEVATION | 17 |
| TWR | 122.905 | DUNDEE TOWER | THR ELEVATION | 17 |
| ATIS | 119.330 | DUNDEE INFORMATION | OBSTACLE ELEVATION | 1814 AMSL (1797) (ABOVE THR) |
| | | | BEARINGS ARE MAGNETIC | |

TRANSITION ALTITUDE
3000



RECOMMENDED PROFILE GLIDE PATH 3°, 318FT/NM

| DME I-DDE | 6 | 5 | 4 | 3 | 2 | 1 |
|-----------|------------|------------|------------|-----------|----------|----------|
| ALT(HGT) | 1970(1953) | 1650(1633) | 1330(1313) | 1010(993) | 690(673) | 380(363) |



| Aircraft Category | A | B | C | Rate of descent | G/S KT | 160 | 140 | 120 | 100 | 80 |
|---------------------------|---------------------------|----------|----------|-----------------|---------------|-----|-----|-----|-----|-----|
| OCA (OCH) | CAT I | 297(280) | 307(290) | 317(300) | FT/MIN | 850 | 740 | 640 | 530 | 420 |
| VM(C)OCA (OCH AAL) | Total Area | 970(953) | 970(953) | 1170(1153) | | | | | | |
| | South of RWY 09/27 | 540(523) | 750(733) | 1080(1063) | | | | | | |

- NOTE 1** Subject to ATC approval, when inbound to NDB(L) DND and within I-DDE DME 10, aircraft may descend to **3000**.
- NOTE 2** NDB(L) DND is 2.6NM from THR RWY 09 and is offset 230M north of LOC C/L.
- NOTE 3** The Category C Instrument Approach Procedure infringes the Perth ATZ at 1800FT above Perth aerodrome elevation. Pilots must notify ATC of their intention to conduct a Category C approach on first contact.
- NOTE 4** The eastern edge of the perth ATZ lies 9.5NM west of THR RWY 09. To prevent confliction with possible VFR traffic in the Perth ATZ, pilots should not extend the outbound leg of the base turn beyond the prescribed procedural distances.
- NOTE 5** Due to terrain, LOC and glidepath flag alarms may be experienced at northern edge of coverage when below glidepath sector.
- NOTE 6** Quality of glidepath guidance is not suitable for coupled approaches below 200FT.
- NOTE 7** EGD604 is 7NM east of Dundee ARP. If it appears likely that during the standard missed approach above, low performance aircraft will infringe EGD604 then such aircraft should turn right at I-DDE DME 4 onto track 136°M and climb to **2000(1983)** before turning right to return to NDB(L) DND at **3000**. Pilots should advise ATC on turning onto 136°M and expect to change to Leuchars Approach when instructed for radar assistance.

CHANGE (4/24): EGR612 WITHDRAWN. HOLD BEARINGS UPDATED.